



REGIONAL SPECIALISED METEOROLOGICAL CENTRE-TROPICAL CYCLONES, NEW DELHI
TROPICAL WEATHER OUTLOOK

DEMS-RSMC TROPICAL CYCLONES NEW DELHI DATED 09.01.2024

TROPICAL WEATHER OUTLOOK FOR NORTH INDIAN OCEAN (THEBAY OF BENGAL OF BENGAL AND THE ARABIAN SEA) VALID FOR NEXT 168 HOURS ISSUED AT 0600 UTC OF 09.01.2024 BASED ON 0300 UTC OF 09.01.2024.

BAY OF BENGAL:

YESTERDAY'S TROUGH FROM SOUTH SRI LANKA TO NORTH COASTAL TAMIL NADU EXTENDED UPTO 0.9 KM ABOVE MEAN SEA LEVEL HAS BECOME LESS MARKED AT 0300UTC OF TODAY, THE 9TH JANUARY.

SCATTERED TO BROKEN LOW AND MEDIUM CLOUDS WITH EMBEDDED INTENSE TO VERY INTENSE CONVECTION LAY OVER SOUTH BAY OF BENGAL, SRI LANKA, PALK STRAIT & GULF OF MANNAR (MINIMUM CTT MINUS 83 DEGREE CEL). SCATTERED LOW AND MEDIUM CLOUDS WITH EMBEDDED MODERATE TO INTENSE CONVECTION LAY OVER WESTCENTRAL BAY OF BENGAL & SOUTH ANDAMAN SEA.

***PROBABILITY OF CYCLOGENESIS (FORMATION OF DEPRESSION) DURING NEXT 168 HRS:**

24 HOURS	24-48 HOURS	48-72 HOURS	72-96 HOURS	96-120 HOURS	120-144 HOURS	144-168 HOURS
NIL	NIL	NIL	NIL	NIL	NIL	NIL

***NOTE: EVERY 24HR FORECAST IS VALID UPTO 0300 UTC (0830 IST) OF NEXT DAY**

ARABIAN SEA:

YESTERDAY'S CYCLONIC CIRCULATION OVER SOUTHEAST ARABIAN SEA LAY OVER SOUTHEAST & ADJOINING EASTCENTRAL ARABIAN SEA AT 1.5 KM ABOVE MEAN SEA LEVEL AT 0300 UTC OF TODAY, THE 9TH JANUARY, 2024. A TROUGH RUN FROM THE CYCLONIC CIRCULATION TO SOUTH GUJARAT ACROSS NORTHEAST ARABIAN SEA AND EXTENDED UPTO 1.5 KM ABOVE MEAN SEA LEVEL AT 0300UTC OF TODAY, THE 9TH JANUARY, 2024.

SCATTERED TO BROKEN LOW AND MEDIUM CLOUDS WITH EMBEDDED INTENSE TO VERY INTENSE CONVECTION LAY OVER SOUTHEAST ARABIAN SEA ADJOINING KERALA COAST & COMORIN AREA (MINIMUM CTT MINUS 82 DEG CEL). SCATTERED LOW AND MEDIUM CLOUDS WITH EMBEDDED MODERATE TO INTENSE CONVECTION LAY OVER EASTCENTRAL ARABIAN SEA ADJOINING GOA-KARNATAKA COAST, REST OF SOUTHEAST ARABIAN SEA, LAKASHADWEEP ISLAND AREA. SCATTERED LOW AND MEDIUM CLOUDS WITH EMBEDDED ISOLATED WEAK TO MODERATE CONVECTION LAY OVER EASTCENTRAL & SOUTHWEST ARABIAN SEA.

***PROBABILITY OF CYCLOGENESIS (FORMATION OF DEPRESSION) DURING NEXT 168 HRS:**

24 HOURS	24-48 HOURS	48-72 HOURS	72-96 HOURS	96-120 HOURS	120-144 HOURS	144-168 HOURS

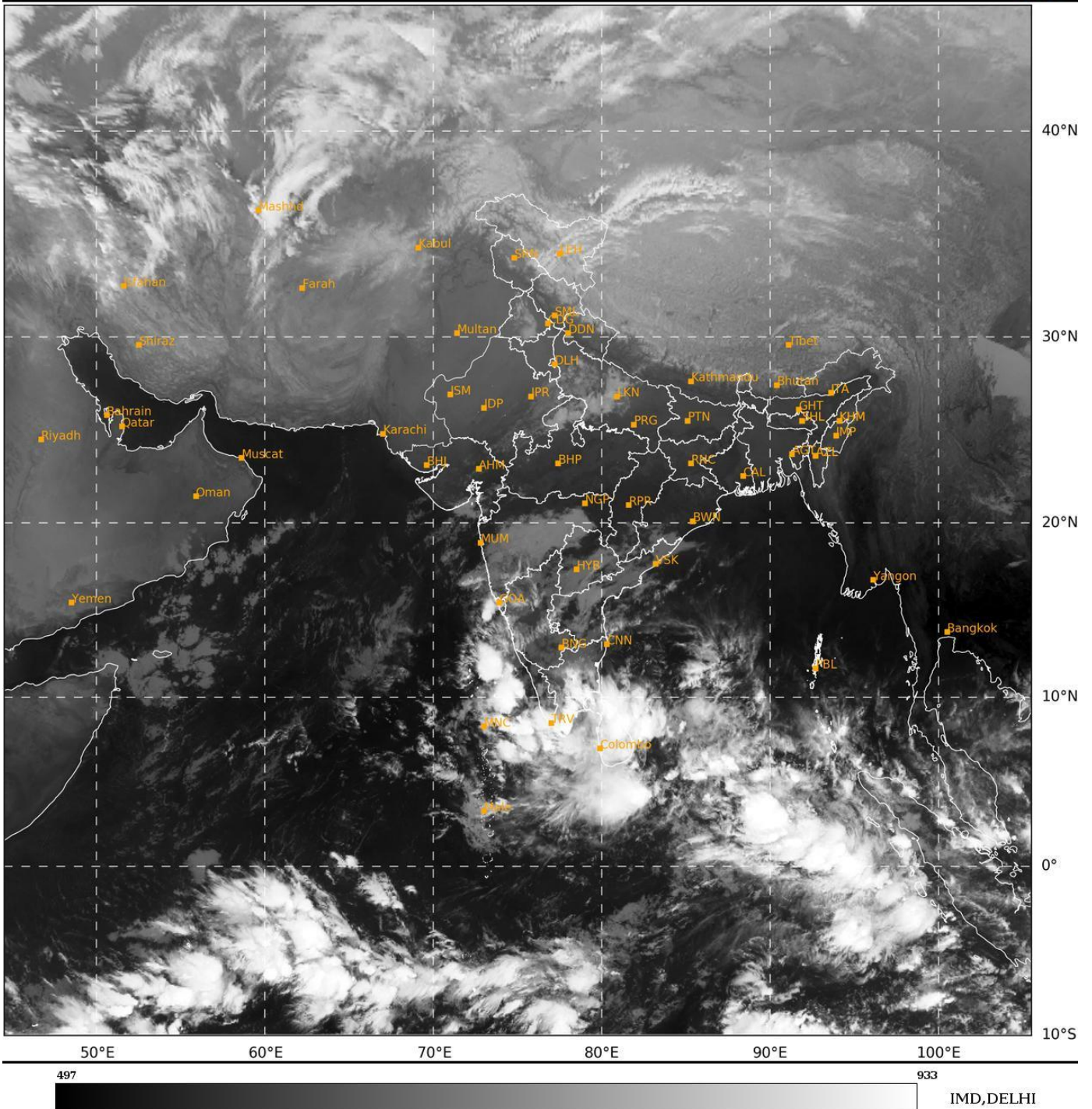
Cloud distribution: (a) Isolated: <25%, Scattered:25-50%, Broken: 51-75%, Solid:>75%, Convection Intensity: (a) Weak: Cloud Top Temperature (CTT) >-25°C, (b) Moderate: CTT: - 25°C to -40°C, (c) Intense: CTT: - 41°C to -70°C and (d) Very Intense: : Less than -70°C
PROBABILITY OF CYCLOGENESIS (FORMATION OF DEPRESSION):NIL: 0%, LOW: 1-33%, , MODERATE: 34-66% AND HIGH: 67-100%
This is a guidance Bulletin for WMO/ESCAP Panel Member countries. Visit respective National websites for Country specific Bulletins

NIL	NIL	NIL	NIL	NIL	NIL	NIL
-----	-----	-----	-----	-----	-----	-----

*NOTE: EVERY 24HR FORECAST IS VALID UPTO 0300 UTC (0830 IST) OF NEXT DAY

SAT : INSAT-3D IMG
IMG_TIR1 10.8 um
LIC Mercator

09-01-2024/(0300 to 0327) GMT
09-01-2024/(0830 to 0857) IST



Cloud distribution: (a) Isolated: <25%, Scattered:25-50%, Broken: 51-75%, Solid:>75%, Convection Intensity: (a) Weak: Cloud Top Temperature (CTT) >-25°C, (b) Moderate: CTT: - 25°C to -40°C, (c) Intense: CTT: - 41°C to -70°C and (d) Very Intense: : Less than -70°C
PROBABILITY OF CYCLOGENESIS (FORMATION OF DEPRESSION):NIL: 0%, LOW: 1-33%, , MODERATE: 34-66% AND HIGH: 67-100%
This is a guidance Bulletin for WMO/ESCAP Panel Member countries. Visit respective National websites for Country specific Bulletins